

Cork Granules

Blond cork granules for floating floors, dry screeds even in particular wet environments

Install instruction



| PRODUCT DESCRIPTION

Cork Granules is an insulating granulate and a levelling natural material, simply produced crushing blond cork: there are no additives. It is characterized by excellent thermal insulation values and its high breathable capacity reduce the formation of mold and moisture compared to traditional products, Cork Granules guarantees an excellent noise reduction, which makes it an ideal product for the construction of impact sound floors of the inter-floor slabs.

| INSTALL GUIDE FLOATING FLOORS ON CORK GRANULES

The blond Cork Granules are ideal for making insulating and ecological dry screeds, between the floor and the screed.



The thicknesses and the sizes of the dry screeds to be used depend a lot on the inter-axis of the load-bearing structure and on the accessibility of the area.

For more informations about the uses and the installation, our offices are ready to answer your questions on www.betonwood.com



After an appropriate dry trowelling of the granulated cork, the BetonWood cement bonded particle boards can be fixed with screws passing through the supporting substructure. Alternatively, it may be useful to use wooden spacers to further facilitate laying operations (as we can see in the figure).

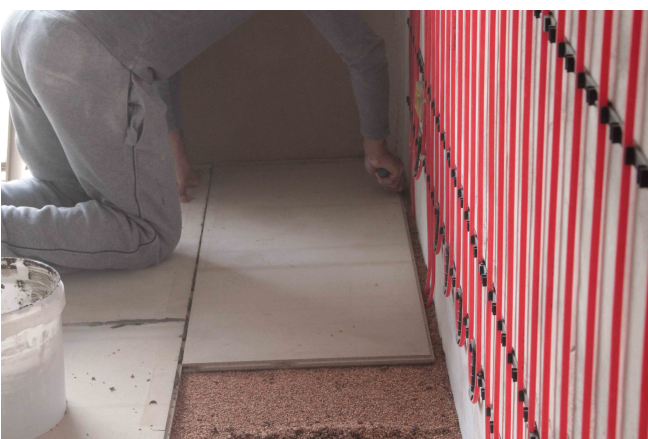


In the case of a totally floating structure on granulated blond cork (as we can see in the figure) we recommend to install cement bonded particle boards with tongue&groove edges BetonWood TG laid by staggering the joints and screwed on each other, with offset arrangement.



Example of cement bonded particle boards BetonWood TG for renovations, small size: thickness 20 mm, size 1200 x 500 mm, tongue&groove edges.

We recommend to use this panel type where the interaxis of the underlying structure is floating, dry, or in the case where it is possible to fix it directly on the floor.



With cement bonded particle boards BetonWood TG with a thickness of 20 mm, excellent thermal insulation can be achieved, as well as a high noise reduction, considering that the thicknesses do not involve problems in terms of weight on the underlying structure.



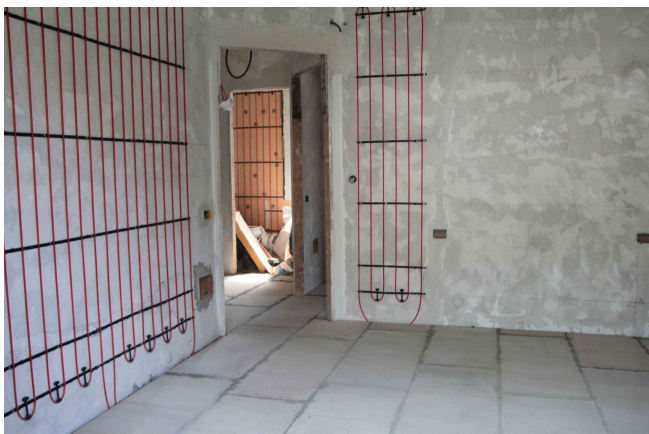
For proper grouting and gluing we use specific products such as **BetonElastic**, a cement mortar that works both for grouting and gluing, filling the joints between the panels.



The floor to be glued on the **BetonWood** cement bonded particle boards can be ceramic.

For clarifications, suggestions and questions, please send an e-mail to our technical office info@betonwood.com

Request glues from our technical department.



As regards the laying of pre-finished parquet floors, some problems are not to be reported. The adhesives are elastic and the structure underlying the parquet is capable of absorbing the expansion movements.

BETONWOOD Srl

Head office :
Via Falcone e Borsellino, 58
I-50013 Campi Bisenzio (FI)

T: +39 055 8953144
F: +39 055 4640609

info@betonwood.com
www.betonwood.com

CRKG-ISTPM R.18.03

This document replaces and cancels previous versions. Only complete BetonWood systems must always be applied. Mixed systems with components from other unauthorized brands are not allowed.

The indications and prescriptions indicated, are based on our current technical-scientific knowledge, which in any case are to be considered purely indicative, as the conditions of use are not controllable by us. Therefore, the purchaser must in any case verify the suitability of the product to the specific case, assuming all responsibility deriving from use, relieving BetonWood srl from any design error, product choice and installation.

For any additional information on the use of this product. contact our technical department. Consult before any purchase terms of sale on www.betonwood.com

Beton  **Wood**